

The background features a light sage green color. Overlaid on this are several geometric shapes: a large, light pink triangle on the left side; a large, dark red triangle on the right side; and a solid dark red horizontal bar at the bottom. The text is centered in the lower-middle portion of the page.

Adobe Builders Ltd.
www.theadobebuilders.com



P
E
R
S
P
E
C
T
I
V
E

All dimensions, layouts, materials and details shown are approximate. Plan is subject to change as deemed necessary by site conditions, by Building Department or other Authority or as determined by Adobe Builders Ltd.



At a Glance Features & Amenities of Tahoe

Primary Apartment Features

- A solid teak main entrance door with a viewer, door knocker, Apartment number and Door handle with lock.
- Floors will be paved with homogeneous tiles (12"×12") or (16"×16")
- Smooth finish plastic paint on the walls and the ceiling, in soft colors.
- Strong and durable veneered flush door shutters with French polish will be used for internal doors.
- One side laminated wooden flush door shutters will be used for bedroom verandahs, kitchen and bathrooms.
- Maid's toilet will have plastic door frame and PVC shutters.
- Mortise lock on all doors.
- Internal door frames will be of Teak Chamble or equivalent wood.
- Sliding glass windows with mohair lining and rainwater barrier in aluminum section.
- Safety grills on windows.
- All electric wiring, phone lines, gas and water lines will be concealed.
- Concealed TV antenna lines in the master bedroom and the living room.
- Telephone connection points in the master bedroom and the living room.
- Imported electric switches, plug points and others fittings.
- Energy saving light holders will be installed in the kitchen and the bathrooms
- Provision with power points for air-conditioner in the master bedroom, the second bedroom and living room.
- Intercom connection with the concierge.

Bathroom Features

- RAK or equivalent combicloset in the master bathroom as per availability.
- Other bathrooms will have RAK or equivalent commode, lowdown and basins.
- Attractive floor and wall tiles in all bathroom walls up to full height.
- Marble basin counter top in the master bathroom.
- Belgian mirrors in all bathrooms.
- Shower tray in the master bathroom.
- Shower area in the other bathrooms.
- High quality chrome plated fittings.
- Push shower with combined bib cock provision in all bathrooms.
- Concealed hot and cold water lines in master bathroom and second bathroom.
- Separate plug points for geyser provision.
- Maid's toilet floor and wall tiles up to 5 feet height with long pan and moving shower.

Kitchen features

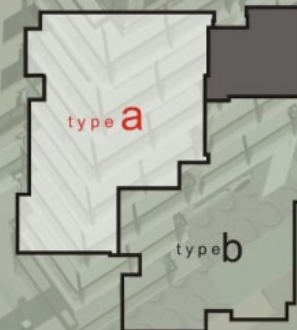
- Concrete platform along one wall at 3 feet height from floor level with homogeneous tiled worktop.
- Double burner gas outlets over concrete platform to support burners.
- Homogeneous floor tiles.
- Seven feet ceramic tiles running along the kitchen counter top wall.
- Concealed hot and cold water lines.
- One high polish counter-top stainless steel sink with mixer.
- One raised glazed tiled sink in the kitchen for down wash area in the kitchen verandah for washing pots.



Floor Plan

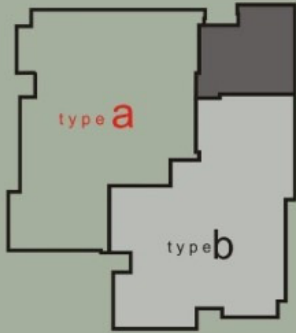


www.theadobebuilders.com



All dimensions, layouts, materials and details shown are approximate. Plan is subject to change as deemed necessary by site conditions, by Building Department or other Authority or as determined by Adobe Builders Ltd.

Floor Plan



type b
1374 SFT.



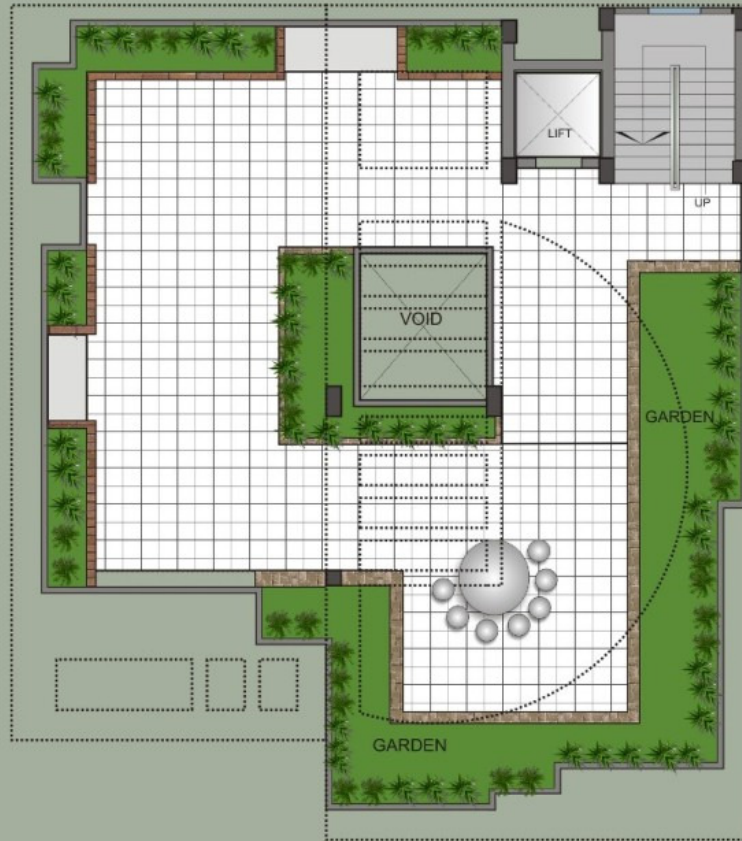
All dimensions, layouts, materials and details shown are approximate. Plan is subject to change as deemed necessary by site conditions, by Building Department or other Authority or as determined by Adobe Builders Ltd.

www.theadobebuilders.com

Roof Plan

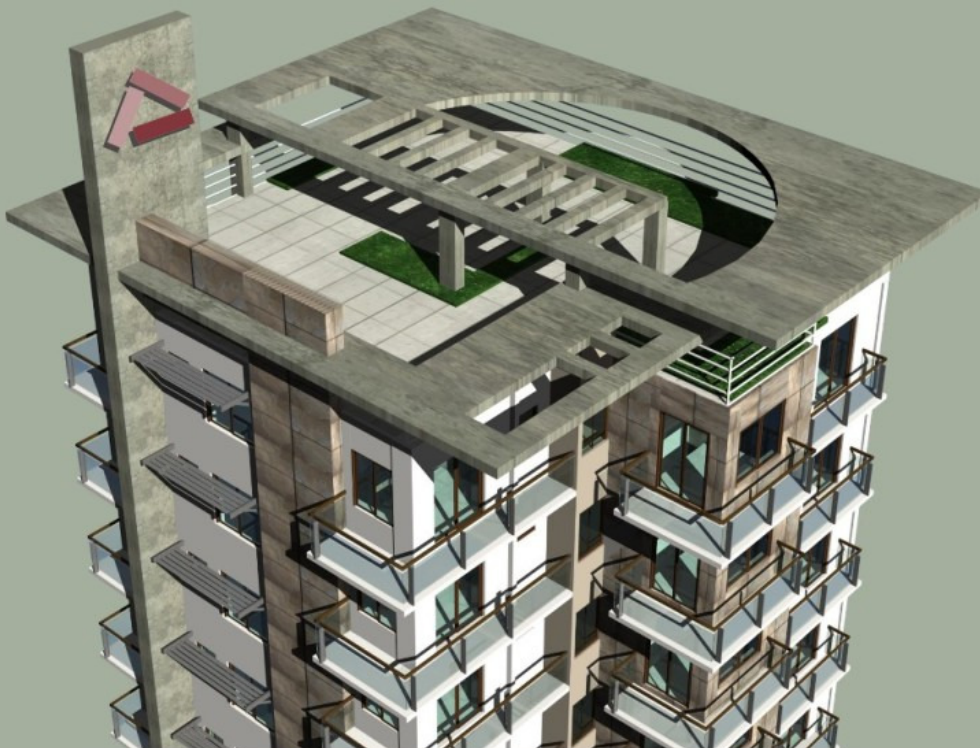
Rooftop Garden

The "piece de resistance" of this building is the rooftop garden. This amazing space has been dreamed up by our design team to offer an oasis from the hustle and bustle of Dhaka while being able to enjoy nature. The innovative design will provide an ambience that is unparalleled. This space can be used to take a leisurely stroll or host a barbeque party. The design will allow an unobstructed panoramic view of Dhaka. The design elements will allow this rooftop garden to be used even if it is raining. Imagine the olden days when the monsoon rains were enjoyed from our balconies and rooftops, what a way to bring back nostalgia!



All dimensions, layouts, materials and details shown are approximate. Plan is subject to change as deemed necessary by site conditions, by Building Department or other Authority or as determined by Adobe Builders Ltd.

www.theadobebuilders.com

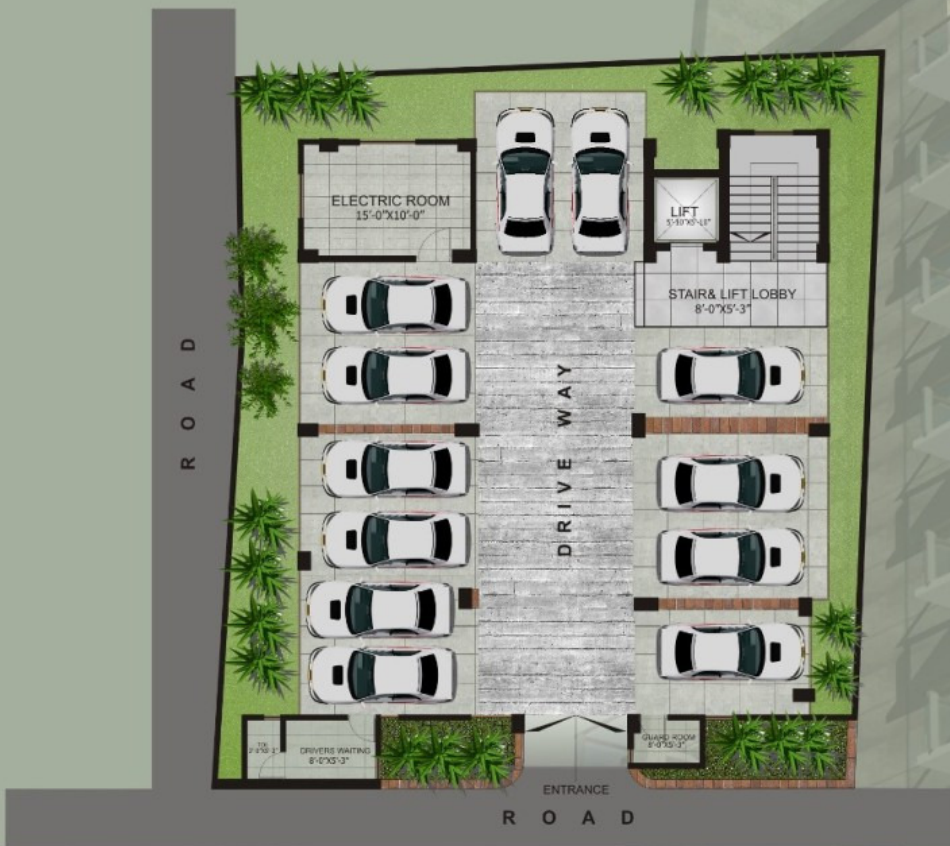


Location Map

adobe tahoe



Ground Floor Plan



All dimensions, layouts, materials and details shown are approximate. Plan is subject to change as deemed necessary by site conditions, by Building Department or other Authority or as determined by Adobe Builders Ltd.

www.theadobebuilders.com

