

Office Building For **DRESSMEN**



P E R S P E C T I V E

All dimensions, layouts, materials and details shown are approximate. Plan is subject to change as deemed necessary by site conditions, by Building Department or other Authority or as determined by Adobe Builders Ltd.



GROUND FLOOR PLAN



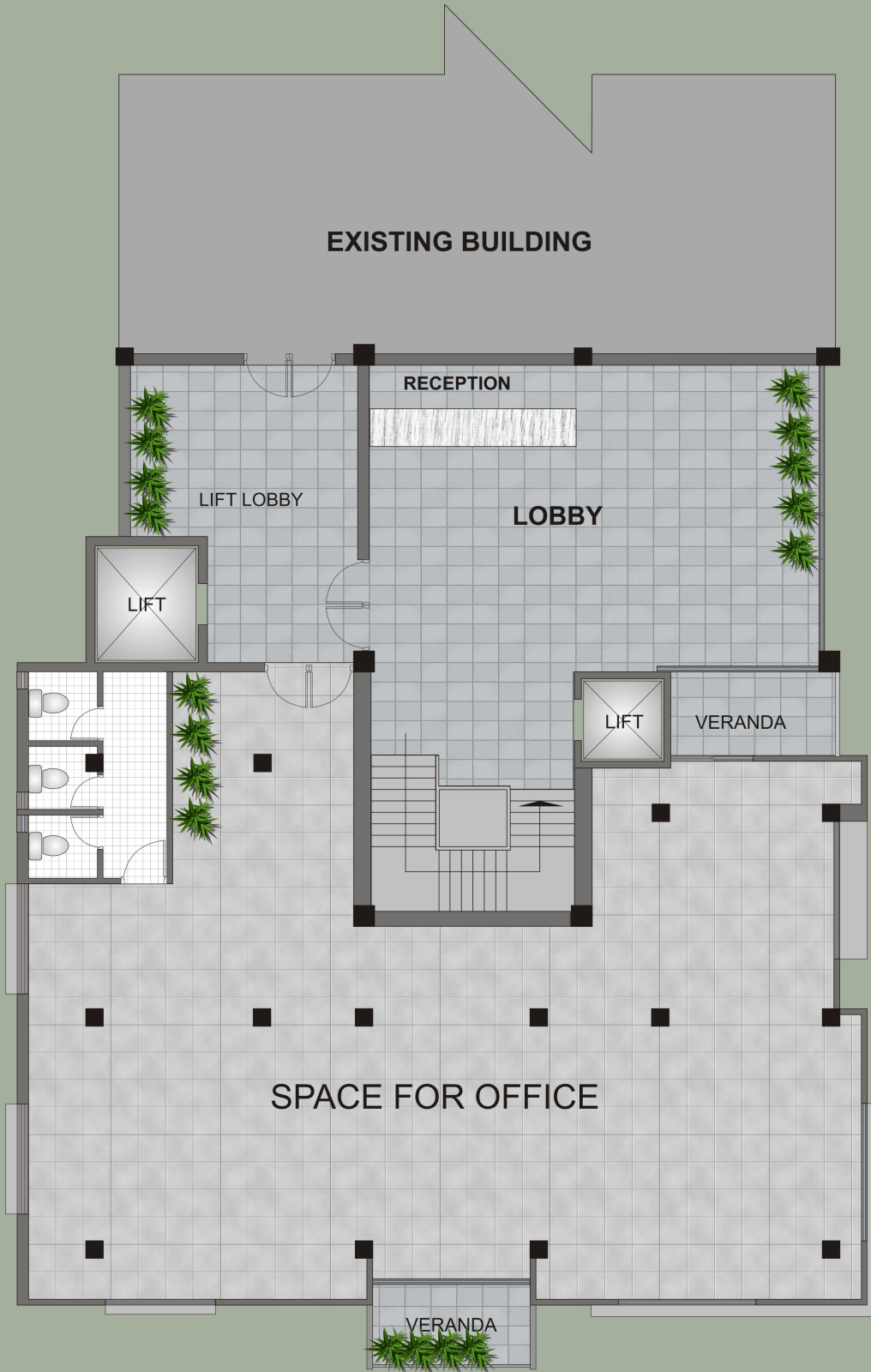
G R O U N D F L O O R P L A N



All dimensions, layouts, materials and details shown are approximate. Plan is subject to change as deemed necessary by site conditions, by Building Department or other Authority or as determined by Adobe Builders Ltd.

www.theadobebuilders.com

TYPICAL FLOOR PLAN



T Y P I C A L F L O O R P L A N

All dimensions, layouts, materials and details shown are approximate. Plan is subject to change as deemed necessary by site conditions, by Building Department or other Authority or as determined by Adobe Builders Ltd.

www.theadobebuilders.com



P R E F A C E

DRESSMEN

Located at Chandra, Kaliakoir road near Dhaka EPZ (Export Processing Zone).

This is Adobe Builders' first contacting project for a factory extension/office building. This is being built as a modern office building with safety and comfort of a work space in mind. It will comprise of both factory space and executive offices. This eight storied office building will have a total floor area of 20,000 square feet. The projected completion date is June/July 2010.

LOCATION MAP



P R E F A C E
A N D
M A P

